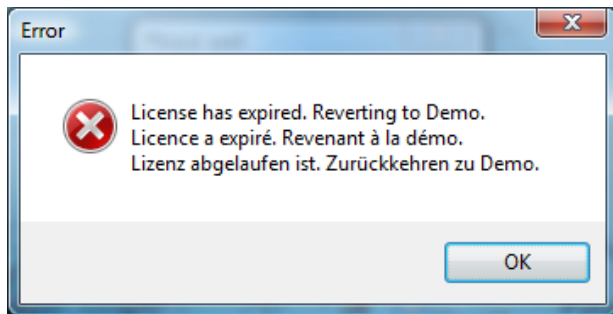


# Instructions for Fixing an Expired License in CompositicaD™

1. If you are getting the following error message when you start Compositad, your license has expired.



- 2.
3. Contact us to request a new license. We will need two files from the Compositad USB: ccm\_lf.cfg and ccm\_mach.cfg. Please email them to us.
4. We will send two files back to you via email: ccm\_key.cfg and ccm\_mach.cfg.
5. Copy the two files you received to the Compositad USB. Overwrite the existing files.
6. Run Compositad. The license should be restored.